

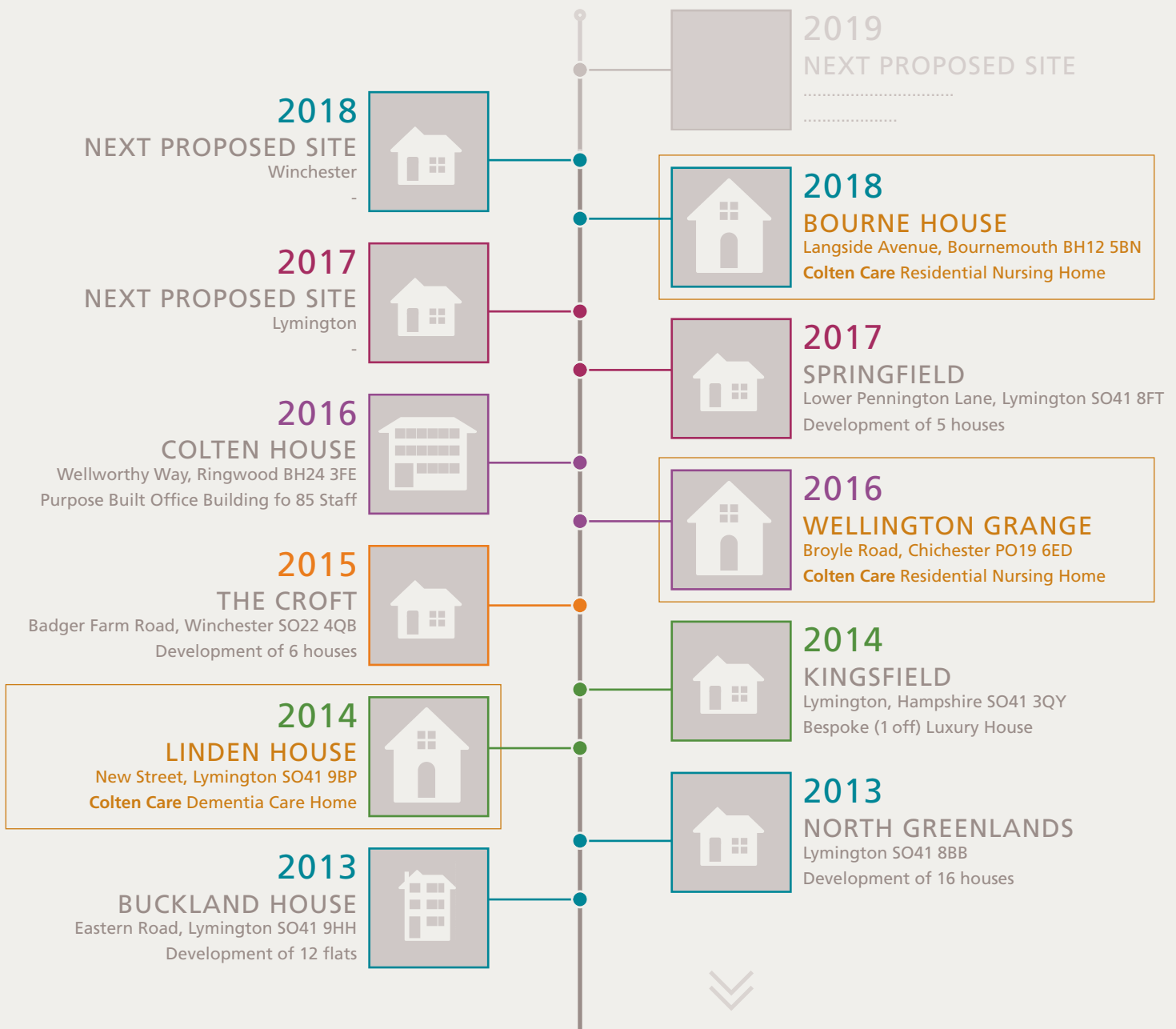
COLTEN DEVELOPMENTS

TIMELINE OF PREVIOUS DEVELOPMENTS

We are unique in the market place operating for over 45 years with the same family-owned values since inception in 1971. We have extensive experience ranging from developing and constructing residential homes, mixed use developments and care homes which are owned and operated by our sister company - Colten Care Limited.

We at Colten have a large portfolio of developments behind us, principally located within the New Forest, Hampshire and Dorset areas. Having been established since 1971 we have designed and constructed a multitude of residential and commercial buildings including Colten House, our office headquarters in Ringwood, which we occupied in October 2016 along with our sister company Colten Care – accommodating over 85 staff.

We have designed and constructed every care home for Colten Care and are proud to feature some of our latest award winning nursing and dementia care homes. We have just started construction of our 21st care home, Bourne House in Poole, providing 68 bedrooms in a grand art deco style.



COLTEN DEVELOPMENTS
TIMELINE OF PREVIOUS DEVELOPMENTS

2012

PEPPERCORN
Sway SO41 6FA

Development of 5 houses & 2 housing association



2011

OAKFIELD

Belmore Lane, Lymington SO41 3AD
Development of 6 houses



2010

FERNHILL

Longham, Ferndown BH22 9AW
Colten Care Dementia Care Home



2009

KINGFISHERS

The Meadows, New Milton BH25 7FJ
Colten Care Residential Nursing Home



2009

CASTLEMAN GARDENS

Ashley Heath, Ringwood BH24 2AY
Development of 5 chalet style bungalows



2008

LAKE CORNER

New Milton BH25 5HD
Development of 7 houses



2007

BRAEMAR LODGE

Stratford Road, Salisbury SP1 3JH
Colten Care Residential Nursing Home



2006

AMBERWOOD HOUSE

Ringwood Road, Ferndown BH22 9AX
Colten Care Residential Nursing Home



2006

THE SALTERNS

Sandy Close, Upton, Poole BH16 5DW
Development of 17 houses/bungalows



2006

YARRELL CROFT

Ramley Road, Lymington SO41 8GZ
Development of 7 houses



2005

SEYMOUR GARDENS

Ringwood BH24 1GS
Development of 7 Houses



2012

ST CATHERINE'S VIEW

Stanmore Lane, Winchester SO22 4BL
Colten Care Dementia Care Home



2011

NEWSTONE HOUSE

Sturminster Newton DT10 1FF
Colten Care Residential Nursing Home



2011

KINGFISHER COTTAGES

The Meadows, New Milton BH25 7FJ
Development of 7 retirement cottages



2010

AMBROSE CORNER

Lymington SO41 8QJ
Development of 13 houses



2009

QUEENS GATE

Chilbolton Avenue, Winchester SO22 5GY
Development of 7 Town Houses & 6 Apartments



2009

ADMIRAL'S POINT

St. Catherines Road, Bournemouth BH6 4AG
Development of 12 apartments and 2 houses



2008

LONDESBOROUGH PLACE

Lymington SO41 8QB
Development of 17 town houses



2007

HOLM OAKS

South Street, Lymington SO41 8QG
Development of 10 Flats



2006

AMBERWOOD LODGE

Ringwood Road, Ferndown BH22 9AX
Development of 12 Retirement Flats



2006

THE FERNS

Golf Links Road, Ferndown BH22 8BZ
Development of 12 Flats



2005

STEWART LODGE

New Road, Ferndown BH22 8EH
Development of 5 flats



COLTEN DEVELOPMENTS
TIMELINE OF PREVIOUS DEVELOPMENTS

2004

THE FIRS

Stockbridge Road, Winchester SO22 6BD

Development of 5 Detached Houses & 9 Town Houses



2004

DUKES COURT

Jenner Close, Verwood BH31 7QF

Development of 20 Retirement Flats, 6 Cottages, 4 Shops



2004

GLENMOOR HOUSE

Glenmoor Road, Ferndown BH22 8PP

Development of 5 Flats



2003

THE ALDBURY

Ringwood Road, Dorset BH12 4NA

Colten Care Dementia Care Home



2002

CASTLE VIEW

Bridport Road, Dorchester DT1 2NH

Colten Care Residential Nursing Home



2002

CHURCH HILL COURT

Church Hill, Verwood BH31 6BG

Development of 8 Retirement Flats



2002

CATHERINE WHEEL GARDENS

Christchurch BH23 2UJ

Development of 23 Retirement Flats/Cottages



2001

ABBOTS BARTON

Worthy Road, Winchester SO23 7HB

Colten Care Residential Nursing Home



2000

CANFORD POINT

Henbest Close, Wimborne BH21 2EX

Development of 39 Terraced/Detached Houses



2000

CASSELLES COURT

Old Milton Road, New Milton BH25 6DX

Development of 12 Retirement Flats



1999

BRACKENS WAY

Lymington SO41 3TL

Development of 16 Houses



2005

YEOMANS LODGE

10 Ashley Road, New Milton BH25 6DA

Development of 11 Flats



2004

TYNHAM COURT

Bridge Street, Christchurch BH23 1BL

Development of 11 town houses & 3 flats



2004

TELFORD PLACE

High Street, Milford-on-Sea SO41 0AB

Development of 14 houses/flats, 1 shop & 1 office



2003

BELMORE LODGE

Milford Road, Lymington SO41 8DJ

Colten Care Residential Nursing Home



2003

ABBOTTS LEA COTTAGES

Worthy Road, Winchester SO23 7HB

Development of 13 Retirement Cottages



2002

BEREWEEKE HOUSE

Bereweeke Road, Winchester SO22 6BB

Development of 13 flats and 1 coach house



2002

CASTLE VIEW COTTAGES

Poundbury, Dorchester DT1 2NH

Development of 4 Retirement Cottages



2001

TOWNGATE MEWS

Ringwood BH24 1NB

Development of 8 town houses



2001

FERNLEA GARDENS

Ferndown BH22 8HQ

Development of 13 Houses/Bungalows



2000

THE WHITE HOUSE

Westover Road, Milford-on-Sea SO41 0PW

Development/Conversion of 14 Flats/Houses



1999

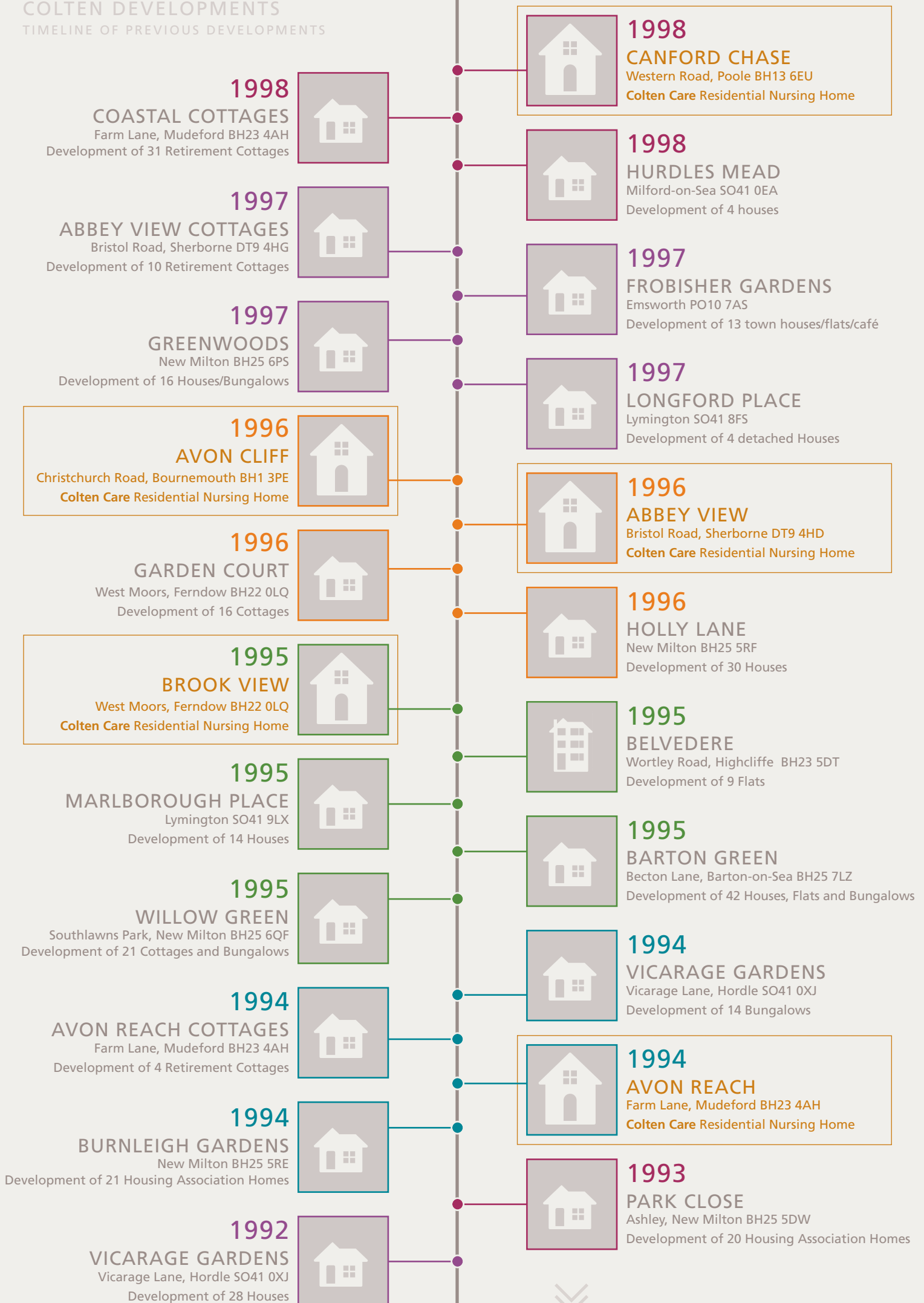
MUDEFORD LANE

Mudford, Christchurch BH23 3HN

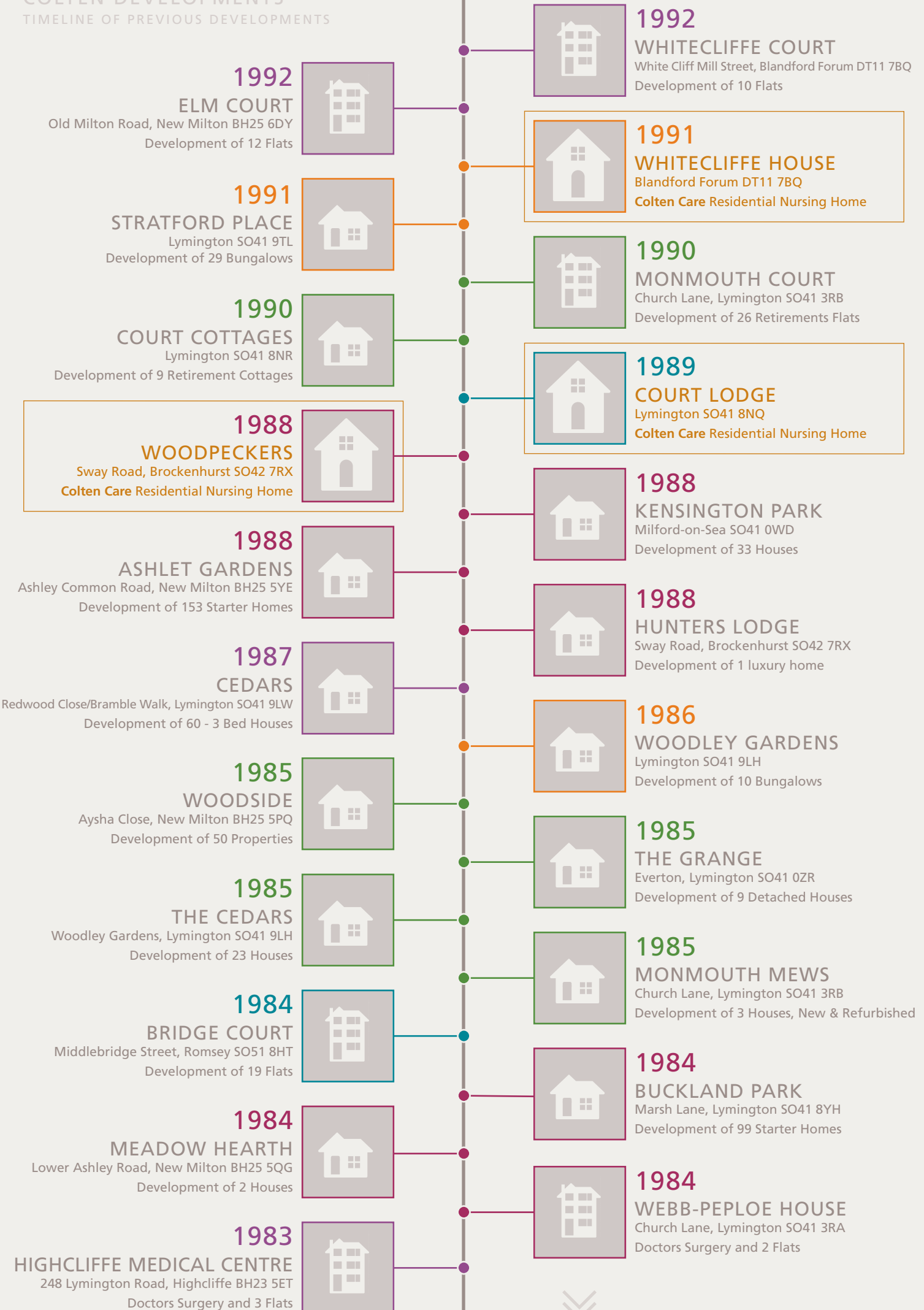
Development of 7 Cottages



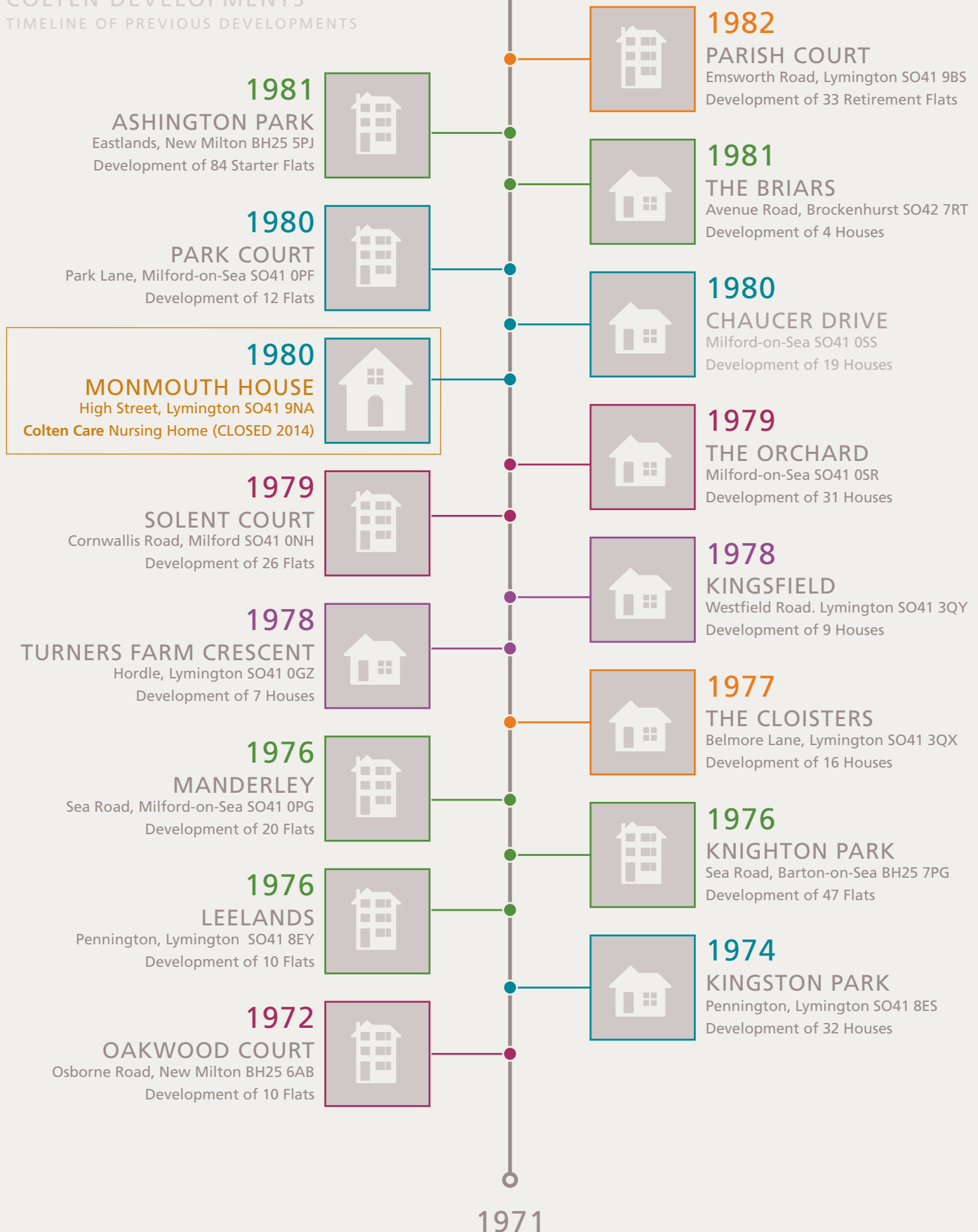
COLTEN DEVELOPMENTS
TIMELINE OF PREVIOUS DEVELOPMENTS



COLTEN DEVELOPMENTS
TIMELINE OF PREVIOUS DEVELOPMENTS



COLTEN DEVELOPMENTS
TIMELINE OF PREVIOUS DEVELOPMENTS



COLTEN DEVELOPMENTS

Founded by John Colwell and Adrian Otten

With extensive experience of both Civil Engineering and Construction, John Colwell and Adrian Otten combined forces in 1971, and as two young men formed Colten Developments.

The name Colten is derived from a combination of the two surnames of John and Adrian.

Since then, Colten Developments has become synonymous with the highest standards of building and excellence, and now has a vast portfolio of developments.