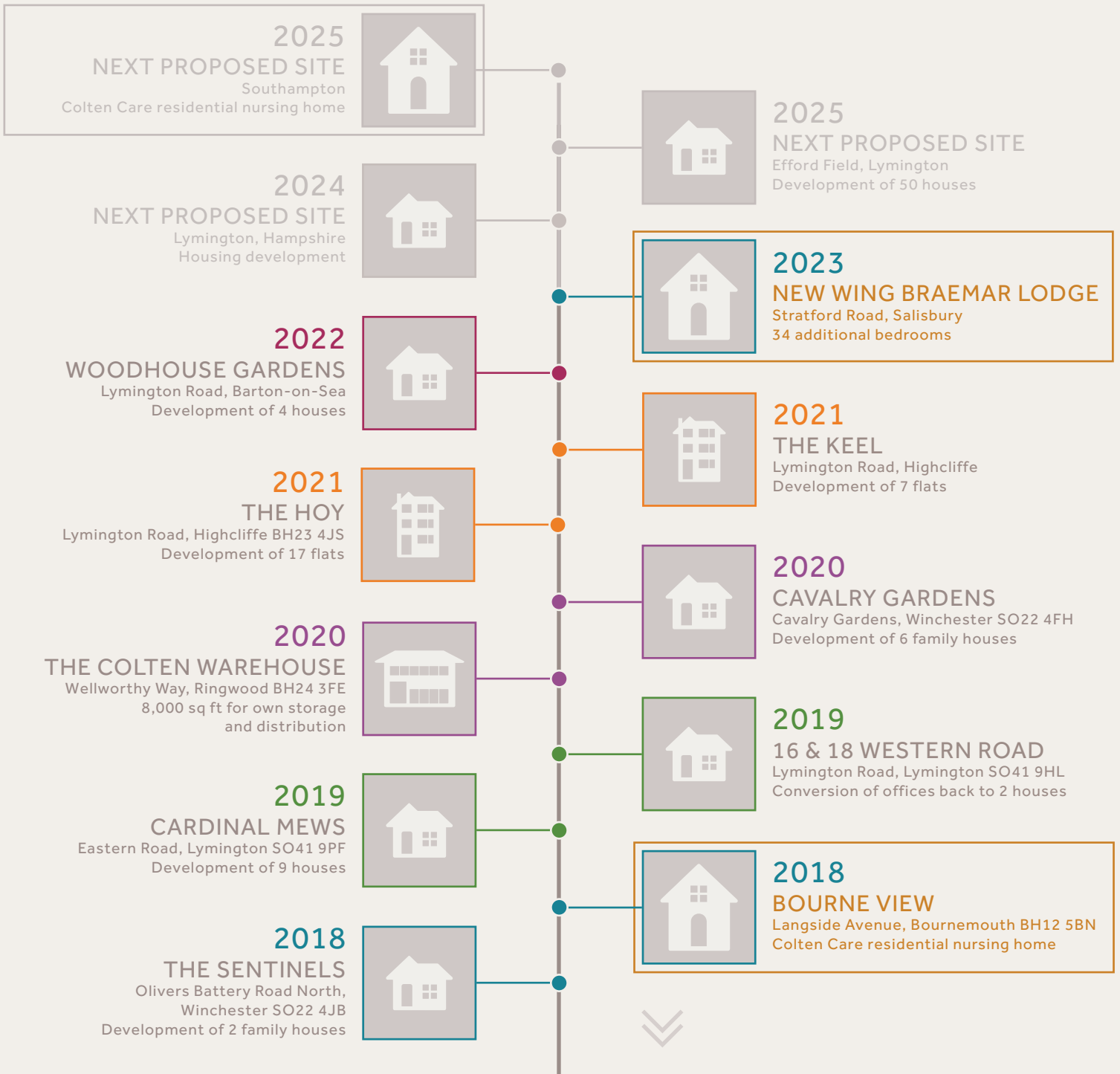


# COLTEN DEVELOPMENTS

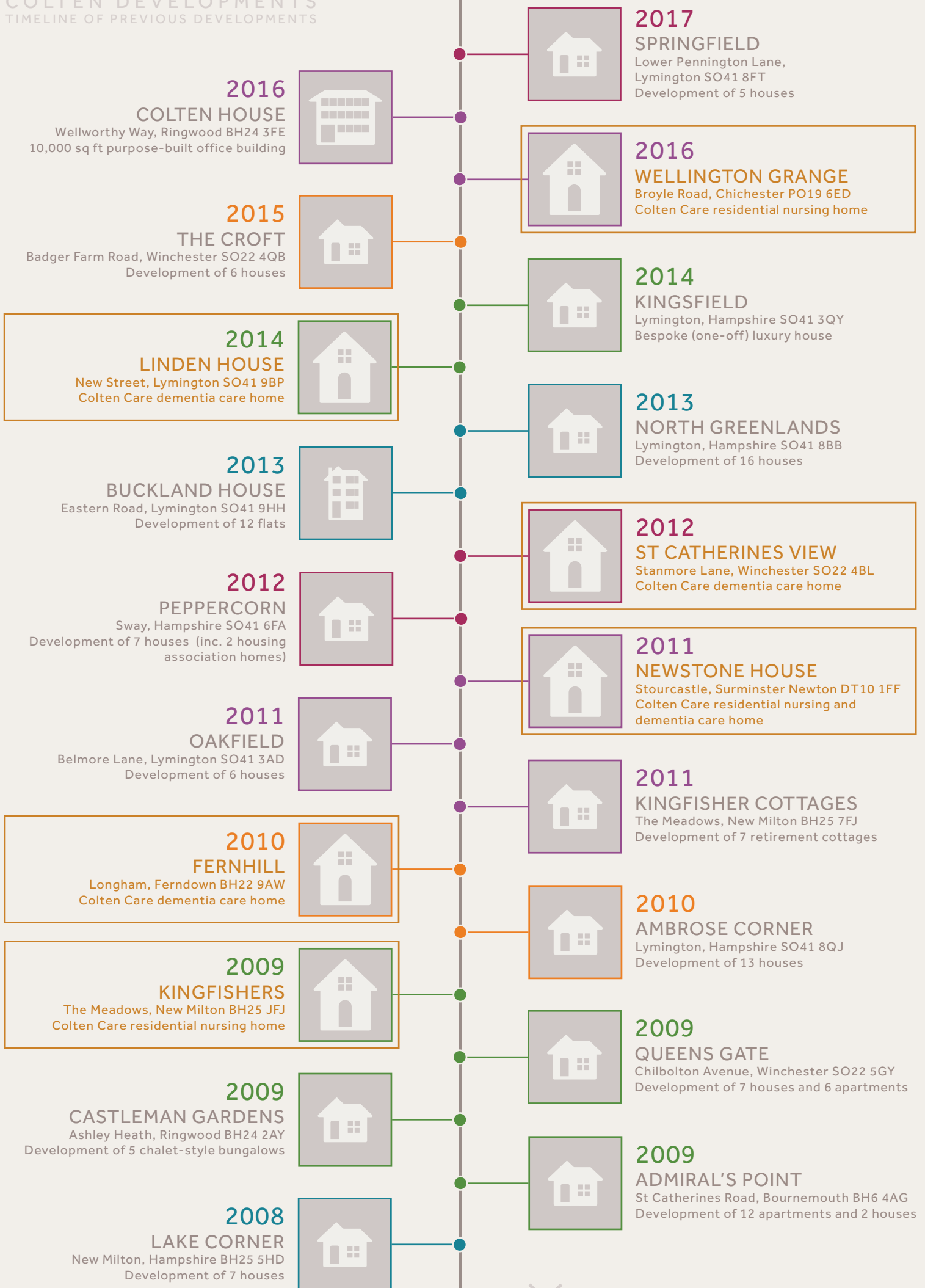
## TIMELINE OF PREVIOUS DEVELOPMENTS

Established in 1971, we are unique in the market place, having operated for over 52 years with the same family-owned values since our inception. Principally located within the New Forest, Hampshire and Dorset areas, we have extensive experience designing and constructing residential developments, mixed-use commercial buildings, and award-winning nursing and dementia care homes.

In 2016, along with our sister company Colten Care (which owns and operates our care home division), we moved into Colten House, our purpose-built office headquarters in Ringwood, now home to over 100 employees. We have designed and constructed every care home for Colten Care and are immensely proud of our partnership.



COLTEN DEVELOPMENTS  
TIMELINE OF PREVIOUS DEVELOPMENTS




COLTEN DEVELOPMENTS  
TIMELINE OF PREVIOUS DEVELOPMENTS

**2007**  
**BRAEMAR LODGE**  
Stratford Road, Salisbury SP1 3JH  
Colten care residential nursing home



**2006**  
**AMBERWOOD HOUSE**  
Ringwood Road, Ferndown BH22 9AX  
Colten Care residential nursing home



**2006**  
**THE SALTERNS**  
Sandy Close, Poole BH16 5DW  
Development of 17 houses and bungalows



**2006**  
**YARRELL CROFT**  
Ramley Road, Lymington SO41 8GZ  
Development of 7 houses



**2005**  
**SEYMOUR GARDENS**  
Ringwood, Hampshire BH24 1GS  
Development of 7 houses



**2004**  
**THE FIRS**  
Stockbridge Road, Winchester SO22 6BD  
Development of 14 houses




**2004**  
**DUKES COURT**  
Jenner Close, Verwood BH31 7QF  
Development of 20 retirement flats,  
6 cottages and 4 shops




**2004**  
**GLENMOOR HOUSE**  
Glenmoor Road, Ferndown BH22 8PP  
Development of 5 flats



**2003**  
**THE ALDBURY**  
Ringwood Road, Dorset BH12 4NA  
Colten Care dementia care home



**2002**  
**CASTLE VIEW**  
Bridport Road, Dorchester DT1 2NH  
Colten Care residential nursing home



**2008**  
**LONDESBOROUGH PLACE**  
Lymington, Hampshire SO41 8QB  
Development of 17 town houses



**2007**  
**HOLM OAKS**  
South Street, Lymington SO41 8QG  
Development of 10 flats



**2006**  
**AMBERWOOD LODGE**  
Ringwood Road, Ferndown BH22 9AX  
Development of 12 retirement flats



**2006**  
**THE FERNS**  
Golf Links Road, Ferndown BH22 8BZ  
Development of 12 flats



**2005**  
**STEWART LODGE**  
New Road, Ferndown BH22 8EH  
Development of 5 flats



**2005**  
**YEOMANS LODGE**  
10 Ashley Road, New Milton BH25 6DA  
Development of 11 flats



**2004**  
**TYNHAM COURT**  
Bridge Street, Christchurch BH23 1BL  
Development of 11 houses and 3 flats



**2004**  
**TELFORD PLACE**  
High Street, Milford-on-Sea SO41 0AB  
Development of 14 houses and flats,  
1 shop and 1 office



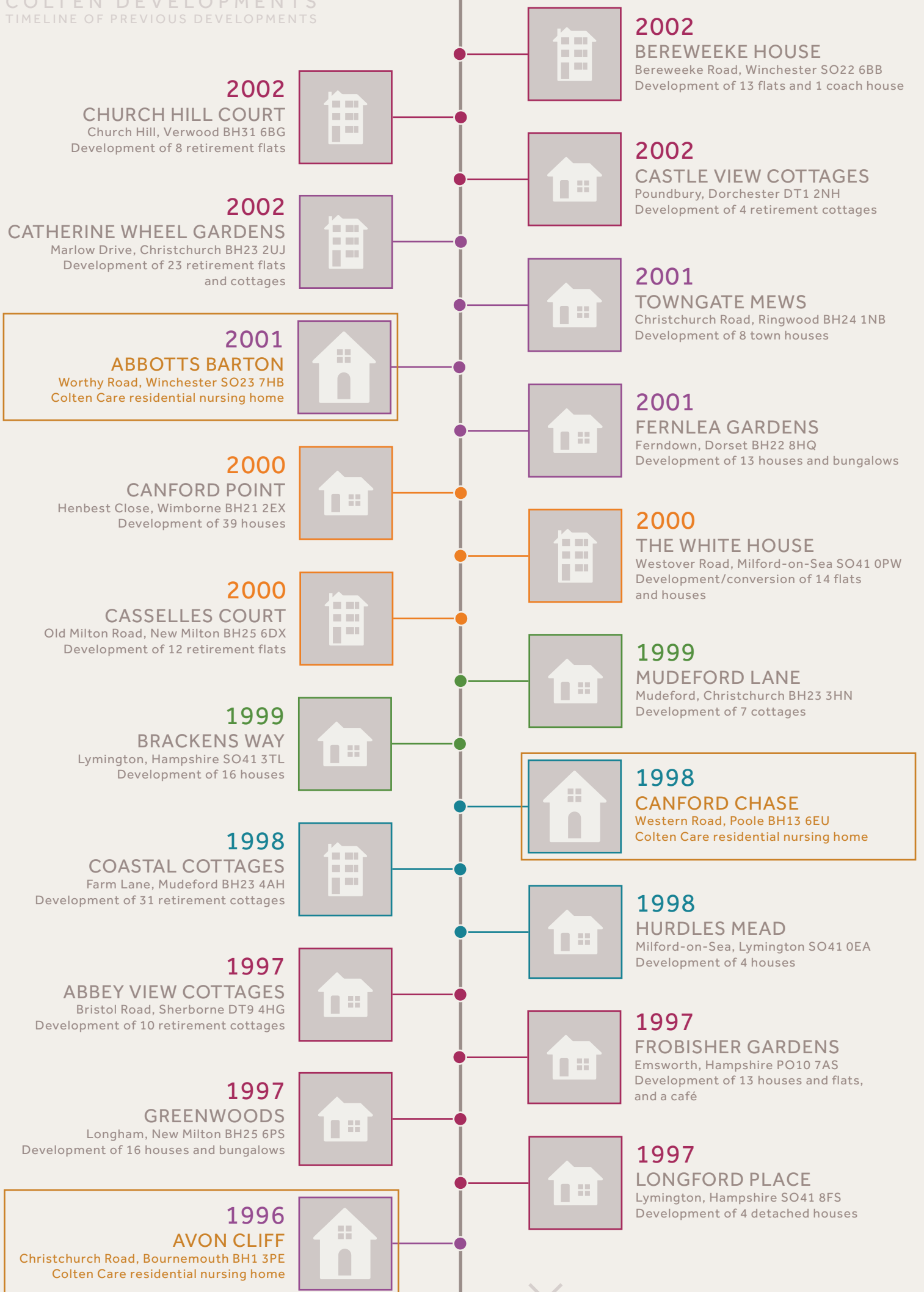
**2003**  
**BELMORE LODGE**  
Milford Road, Lymington SO41 8DJ  
Colten Care residential nursing home



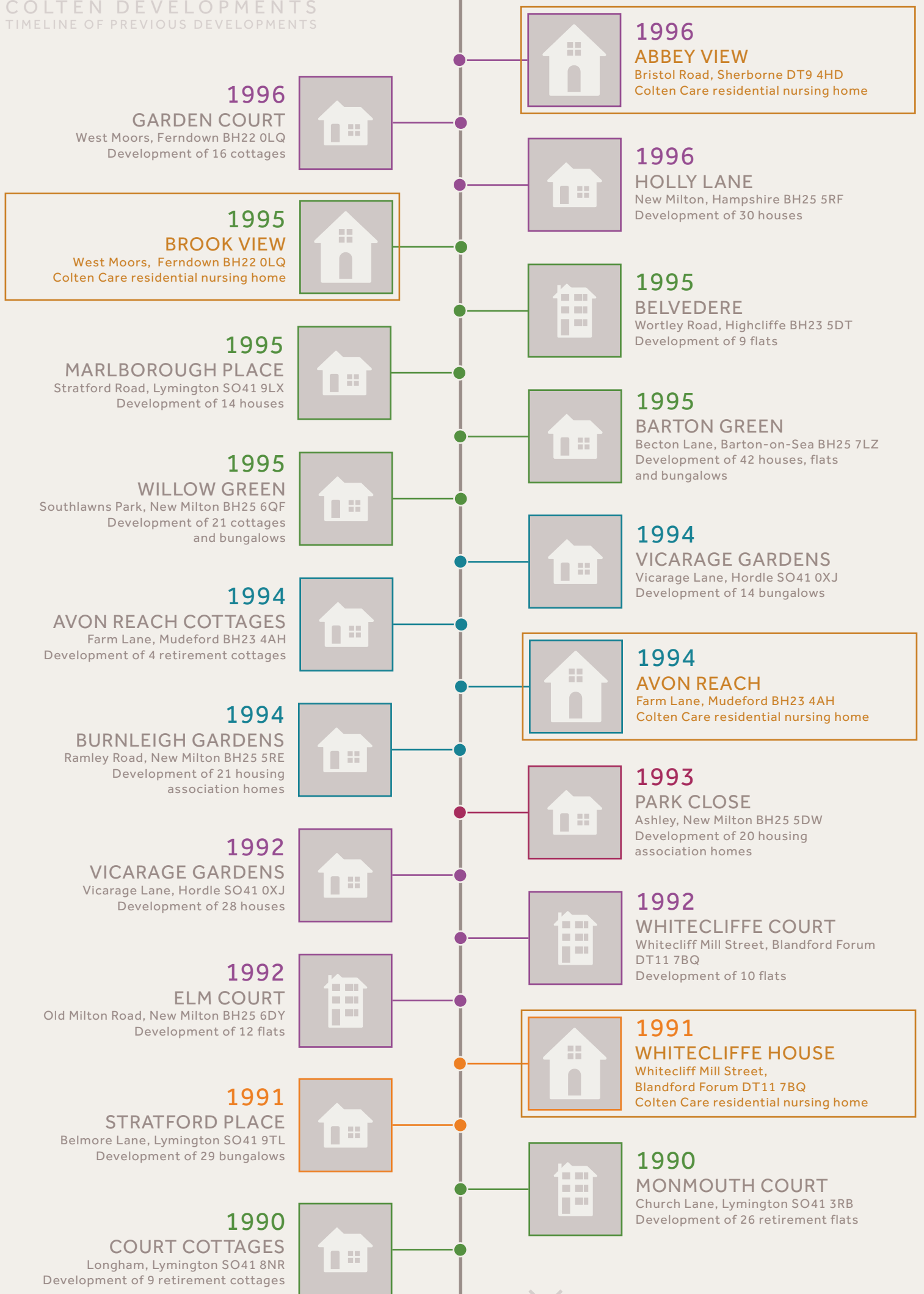
**2003**  
**ABBOTTS LEA COTTAGES**  
Worthy Road, Winchester SO23 7HB  
Development of 13 retirement cottages



COLTEN DEVELOPMENTS  
TIMELINE OF PREVIOUS DEVELOPMENTS




COLTEN DEVELOPMENTS  
TIMELINE OF PREVIOUS DEVELOPMENTS



COLTEN DEVELOPMENTS  
TIMELINE OF PREVIOUS DEVELOPMENTS

**1988**  
**WOODPECKERS**  
Sway Road, Brockenhurst SO42 7RX  
Colten Care residential nursing home



**1989**  
**COURT LODGE**  
Court Close, Lymington SO41 8NQ  
Colten Care residential nursing home



**1988**  
**ASHLET GARDENS**  
Ashley Common Road, New Milton BH25 5YE  
Development of 153 starter homes



**1988**  
**KENSINGTON PARK**  
Milford-on-Sea, Lymington SO41 0WD  
Development of 33 houses



**1987**  
**THE CEDARS**  
Redwood Close/Bramble Walk,  
Lymington SO41 9LW  
Development of 60 houses



**1988**  
**HUNTERS LODGE**  
Sway Road, Brockenhurst SO42 7RX  
Development of a single luxury home



**1985**  
**WOODSIDE**  
Aysha Close, New Milton BH25 5PQ  
Development of 50 properties



**1986**  
**WOODLEY GARDENS**  
Lymington, Hampshire SO41 9LH  
Development of 10 bungalows



**1985**  
**THE CEDARS**  
Woodley Gardens, Lymington SO41 9LH  
Development of 23 houses



**1985**  
**THE GRANGE**  
Everton, Lymington SO41 0ZR  
Development of 9 detached houses



**1984**  
**BRIDGE COURT**  
Middlebridge Street, Romsey SO51 8HT  
Development of 19 flats



**1985**  
**MONMOUTH MEWS**  
Church Lane, Lymington SO41 3RB  
Development of 3 houses  
(new and refurbished)



**1984**  
**MEADOW HEARTH**  
Lower Ashley Road, New Milton BH25 5QG  
Development of 2 houses



**1984**  
**BUCKLAND PARK**  
Marsh Lane, Lymington SO41 8YH  
Development of 99 starter homes



**1983**  
**HIGHCLIFFE MEDICAL CENTRE**  
248 Lymington Road, Highcliffe BH23 5ET  
Doctors surgery and 3 flats



**1984**  
**WEBB-PEPLOE HOUSE**  
Church Lane, Lymington SO41 3RA  
Doctors surgery and 2 flats



**1981**  
**ASHINGTON PARK**  
Eastlands, New Milton BH25 5PJ  
Development of 84 starter flats



**1982**  
**PARISH COURT**  
Emsworth Road, Lymington SO41 9BS  
Development of 33 retirement flats



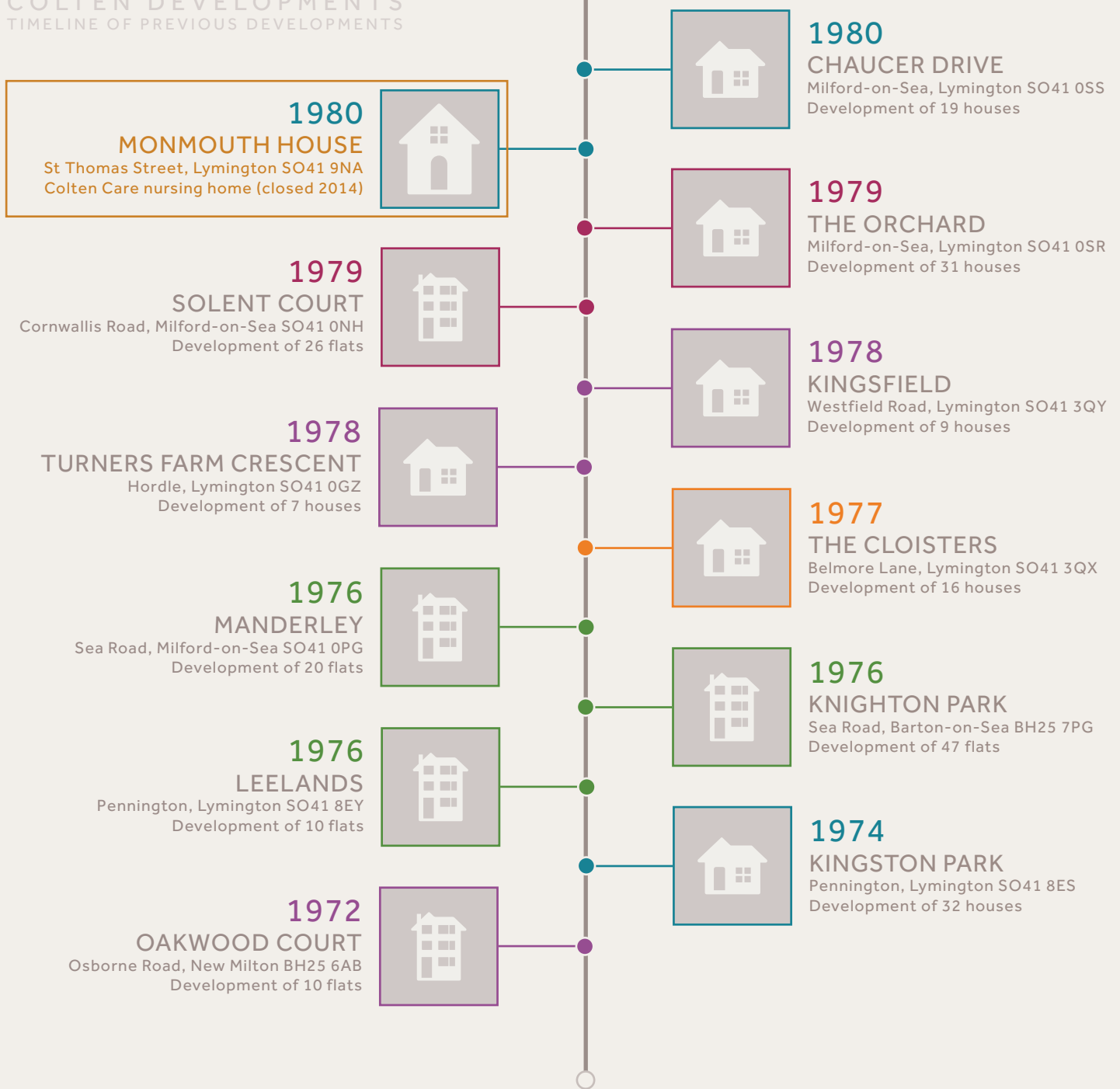
**1980**  
**PARK COURT**  
Park Lane, Milford-on-Sea SO41 0PF  
Development of 12 flats



**1981**  
**THE BRIARS**  
Avenue Road, Brockenhurst SO42 7RT  
Development of 4 houses



COLTEN DEVELOPMENTS  
TIMELINE OF PREVIOUS DEVELOPMENTS



1971

COLTEN DEVELOPMENTS

Founded by John Colwell and Adrian Otten

With their extensive experience, John Colwell and Adrian Otten combined forces in 1971 as two young men and formed Colten Developments. The name Colten is derived from a combination of the two surnames of John and Adrian. Since then, Colten Developments has become synonymous with the highest standards of building and excellence, and now has a vast portfolio of developments.

