

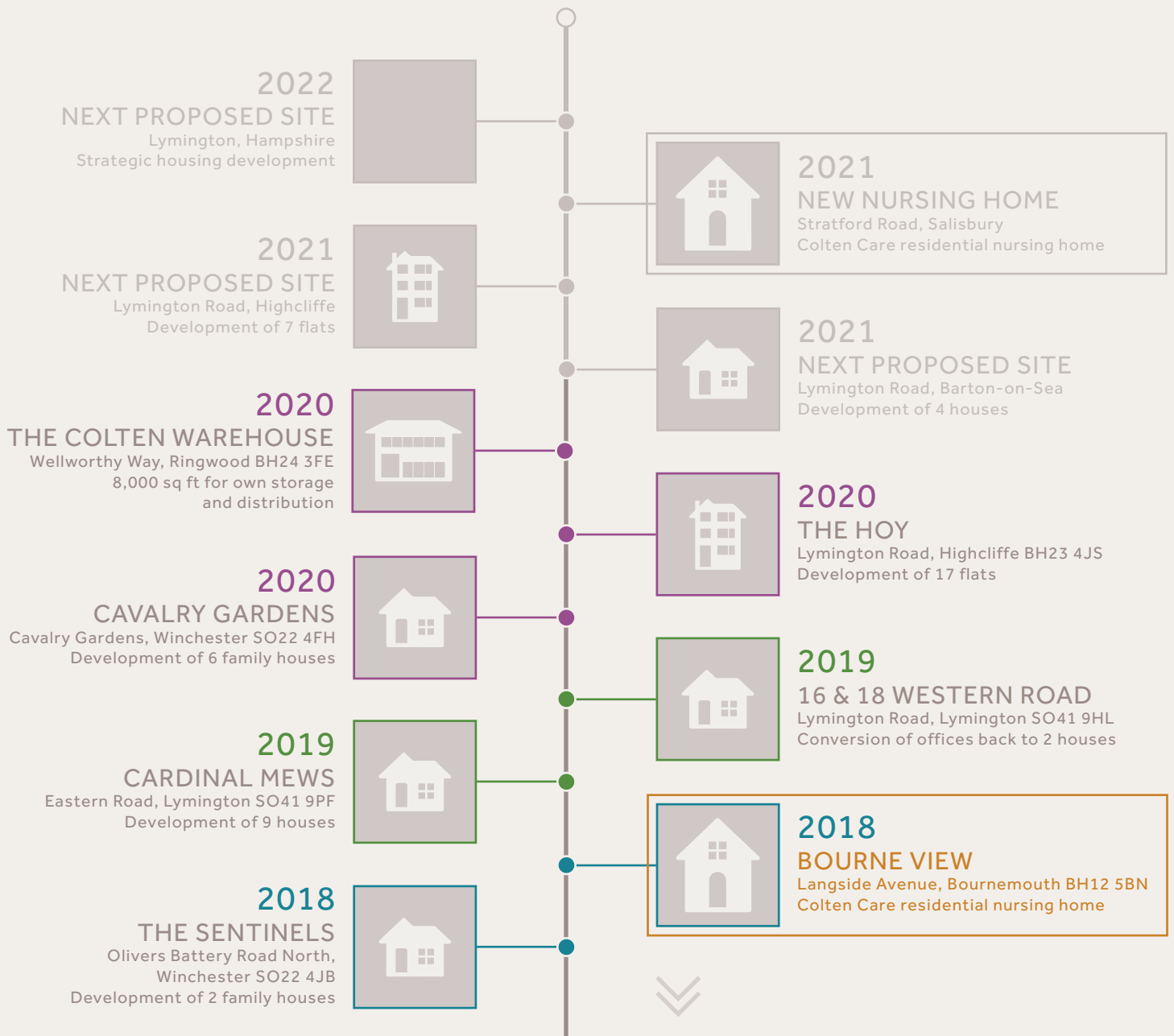


COLTEN DEVELOPMENTS

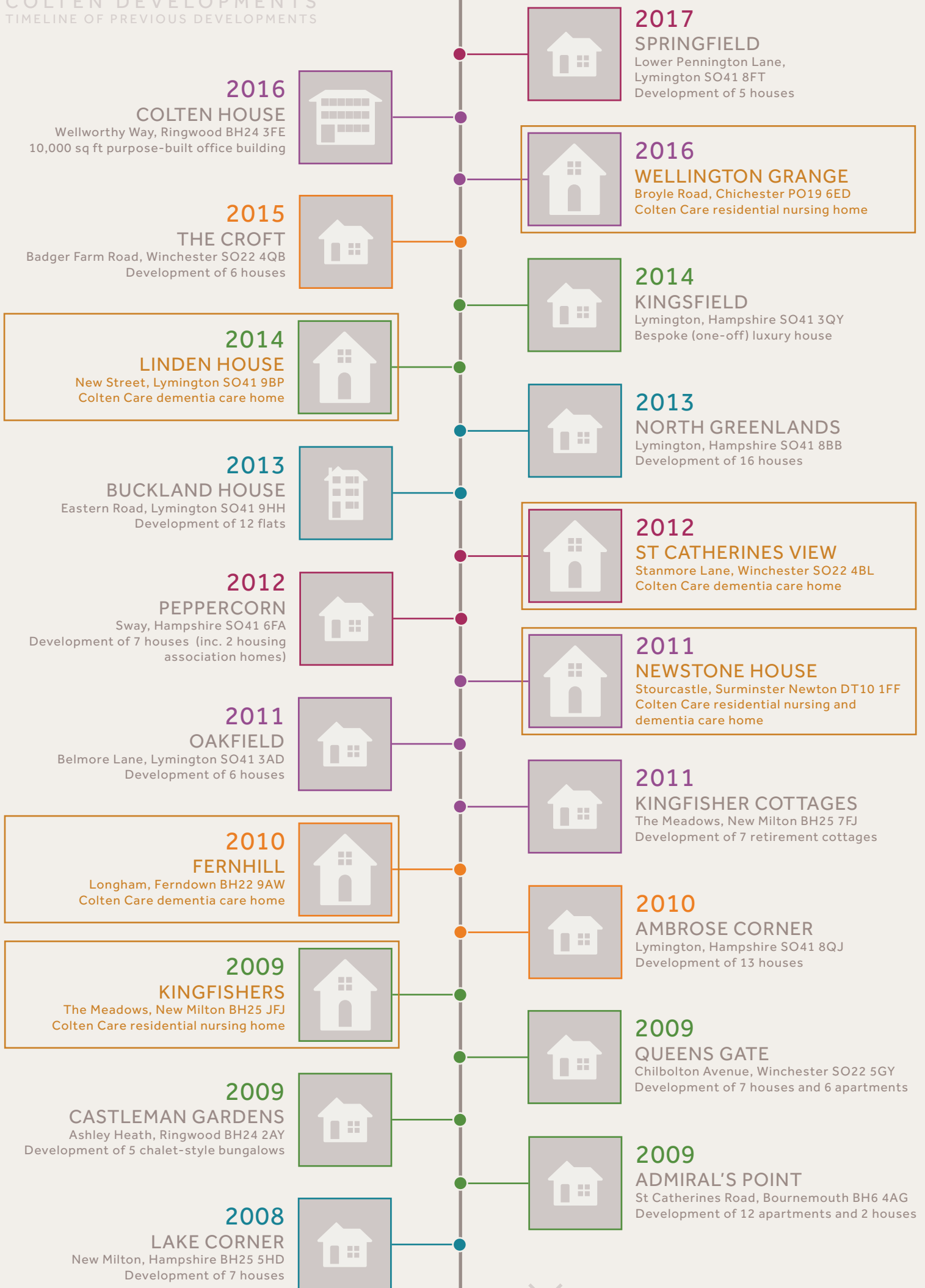
TIMELINE OF PREVIOUS DEVELOPMENTS

Established in 1971, we are unique in the market place, having operated for over 49 years with the same family-owned values since our inception. Principally located within the New Forest, Hampshire and Dorset areas, we have extensive experience designing and constructing residential developments, mixed-use commercial buildings, and award-winning nursing and dementia care homes.

In 2016, along with our sister company Colten Care (which owns and operates our care home division), we moved into Colten House, our purpose-built office headquarters in Ringwood, now home to over 85 employees. We have designed and constructed every care home for Colten Care and are immensely proud of our partnership.




COLTEN DEVELOPMENTS
TIMELINE OF PREVIOUS DEVELOPMENTS




COLTEN DEVELOPMENTS
TIMELINE OF PREVIOUS DEVELOPMENTS

2007
BRAEMAR LODGE
Stratford Road, Salisbury SP1 3JH
Colten care residential nursing home



2006
AMBERWOOD HOUSE
Ringwood Road, Ferndown BH22 9AX
Colten Care residential nursing home



2006
THE SALTERNS
Sandy Close, Poole BH16 5DW
Development of 17 houses and bungalows



2006
YARRELL CROFT
Ramley Road, Lymington SO41 8GZ
Development of 7 houses



2005
SEYMOUR GARDENS
Ringwood, Hampshire BH24 1GS
Development of 7 houses



2004
THE FIRS
Stockbridge Road, Winchester SO22 6BD
Development of 14 houses




2004
DUKES COURT
Jenner Close, Verwood BH31 7QF
Development of 20 retirement flats,
6 cottages and 4 shops



2004
GLENMOOR HOUSE
Glenmoor Road, Ferndown BH22 8PP
Development of 5 flats



2003
THE ALDBURY
Ringwood Road, Dorset BH12 4NA
Colten Care dementia care home



2002
CASTLE VIEW
Bridport Road, Dorchester DT1 2NH
Colten Care residential nursing home




2008
LONDESBOROUGH PLACE
Lymington, Hampshire SO41 8QB
Development of 17 town houses



2007
HOLM OAKS
South Street, Lymington SO41 8QG
Development of 10 flats



2006
AMBERWOOD LODGE
Ringwood Road, Ferndown BH22 9AX
Development of 12 retirement flats



2006
THE FERNS
Golf Links Road, Ferndown BH22 8BZ
Development of 12 flats



2005
STEWART LODGE
New Road, Ferndown BH22 8EH
Development of 5 flats



2005
YEOMANS LODGE
10 Ashley Road, New Milton BH25 6DA
Development of 11 flats



2004
TYNHAM COURT
Bridge Street, Christchurch BH23 1BL
Development of 11 houses and 3 flats



2004
TELFORD PLACE
High Street, Milford-on-Sea SO41 0AB
Development of 14 houses and flats,
1 shop and 1 office



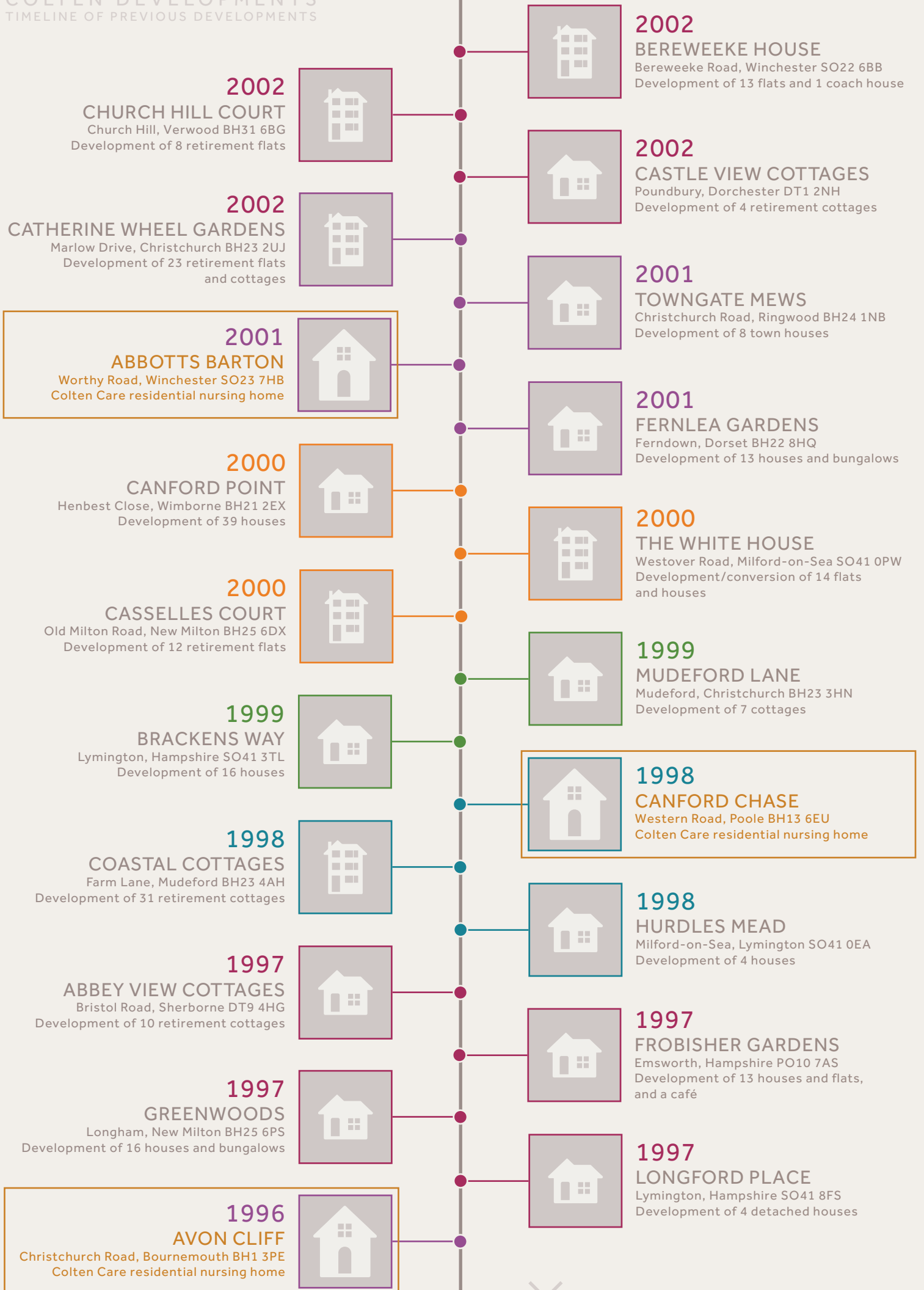
2003
BELMORE LODGE
Milford Road, Lymington SO41 8DJ
Colten Care residential nursing home



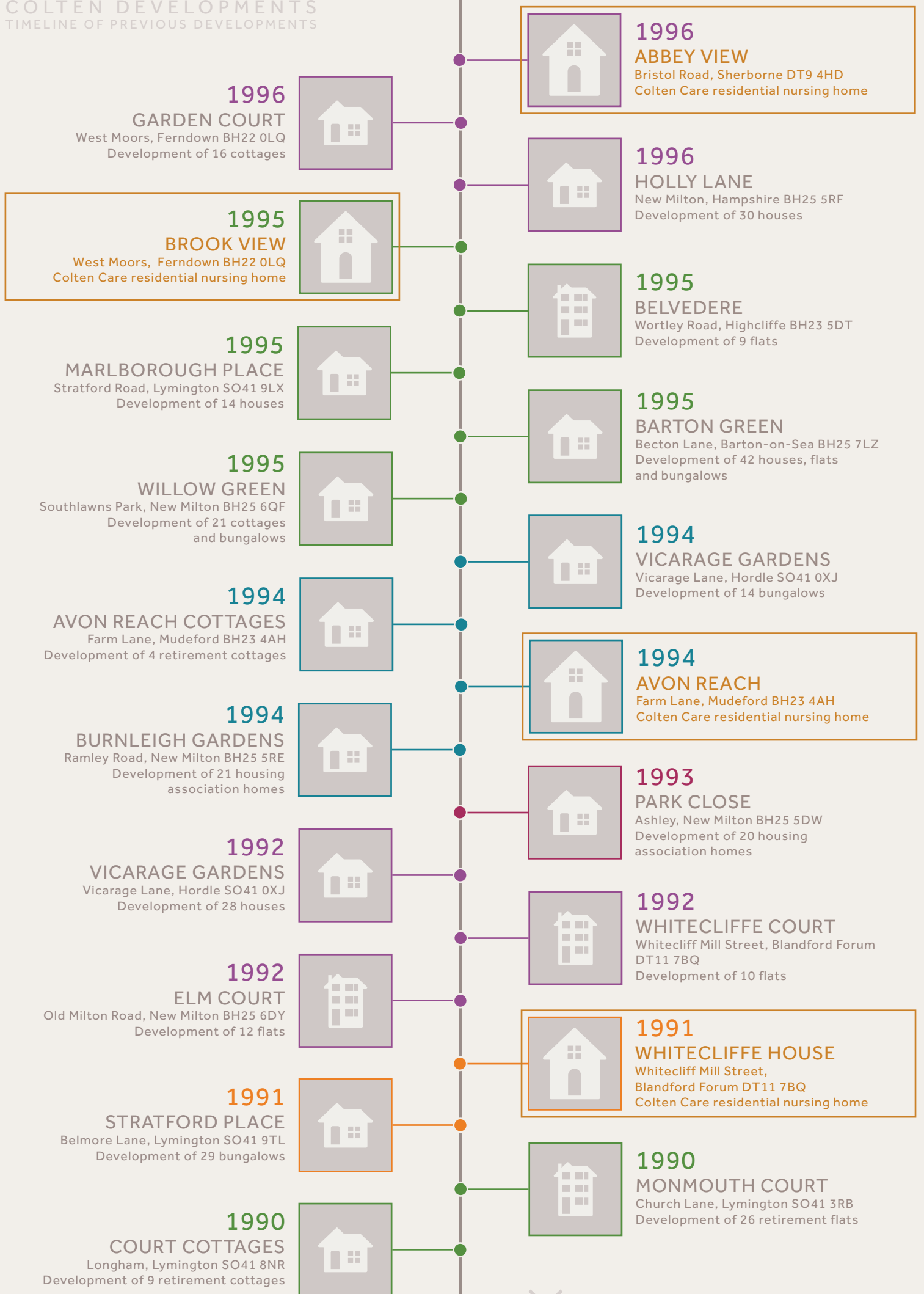
2003
ABBOTTS LEA COTTAGES
Worthy Road, Winchester SO23 7HB
Development of 13 retirement cottages



COLTEN DEVELOPMENTS
TIMELINE OF PREVIOUS DEVELOPMENTS




COLTEN DEVELOPMENTS
TIMELINE OF PREVIOUS DEVELOPMENTS



COLTEN DEVELOPMENTS
TIMELINE OF PREVIOUS DEVELOPMENTS

1988
WOODPECKERS
Sway Road, Brockenhurst SO42 7RX
Colten Care residential nursing home



1989
COURT LODGE
Court Close, Lymington SO41 8NQ
Colten Care residential nursing home



1988
ASHLET GARDENS
Ashley Common Road, New Milton BH25 5YE
Development of 153 starter homes



1988
KENSINGTON PARK
Milford-on-Sea, Lymington SO41 0WD
Development of 33 houses



1987
THE CEDARS
Redwood Close/Bramble Walk,
Lymington SO41 9LW
Development of 60 houses



1988
HUNTERS LODGE
Sway Road, Brockenhurst SO42 7RX
Development of a single luxury home



1985
WOODSIDE
Aysha Close, New Milton BH25 5PQ
Development of 50 properties



1986
WOODLEY GARDENS
Lymington, Hampshire SO41 9LH
Development of 10 bungalows



1985
THE CEDARS
Woodley Gardens, Lymington SO41 9LH
Development of 23 houses



1985
THE GRANGE
Everton, Lymington SO41 0ZR
Development of 9 detached houses



1984
BRIDGE COURT
Middlebridge Street, Romsey SO51 8HT
Development of 19 flats



1985
MONMOUTH MEWS
Church Lane, Lymington SO41 3RB
Development of 3 houses
(new and refurbished)



1984
MEADOW HEARTH
Lower Ashley Road, New Milton BH25 5QG
Development of 2 houses



1984
BUCKLAND PARK
Marsh Lane, Lymington SO41 8YH
Development of 99 starter homes



1983
HIGHCLIFFE MEDICAL CENTRE
248 Lymington Road, Highcliffe BH23 5ET
Doctors surgery and 3 flats



1984
WEBB-PEPLOE HOUSE
Church Lane, Lymington SO41 3RA
Doctors surgery and 2 flats



1981
ASHINGTON PARK
Eastlands, New Milton BH25 5PJ
Development of 84 starter flats



1982
PARISH COURT
Emsworth Road, Lymington SO41 9BS
Development of 33 retirement flats



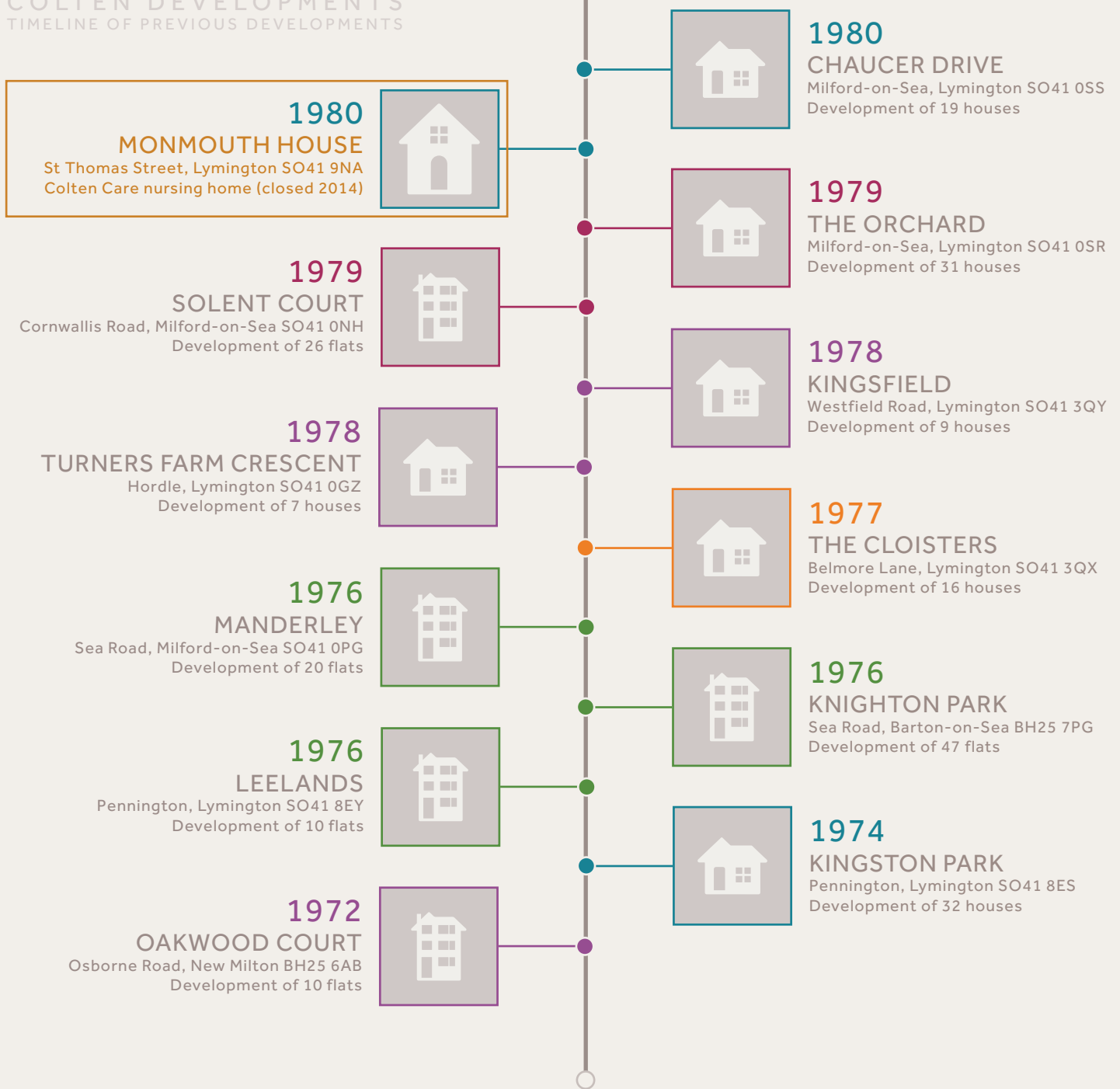
1980
PARK COURT
Park Lane, Milford-on-Sea SO41 0PF
Development of 12 flats



1981
THE BRIARS
Avenue Road, Brockenhurst SO42 7RT
Development of 4 houses



COLTEN DEVELOPMENTS
TIMELINE OF PREVIOUS DEVELOPMENTS



1971

COLTEN DEVELOPMENTS

Founded by John Colwell and Adrian Otten

With their extensive experience, John Colwell and Adrian Otten combined forces in 1971 as two young men and formed Colten Developments. The name Colten is derived from a combination of the two surnames of John and Adrian. Since then, Colten Developments has become synonymous with the highest standards of building and excellence, and now has a vast portfolio of developments.

